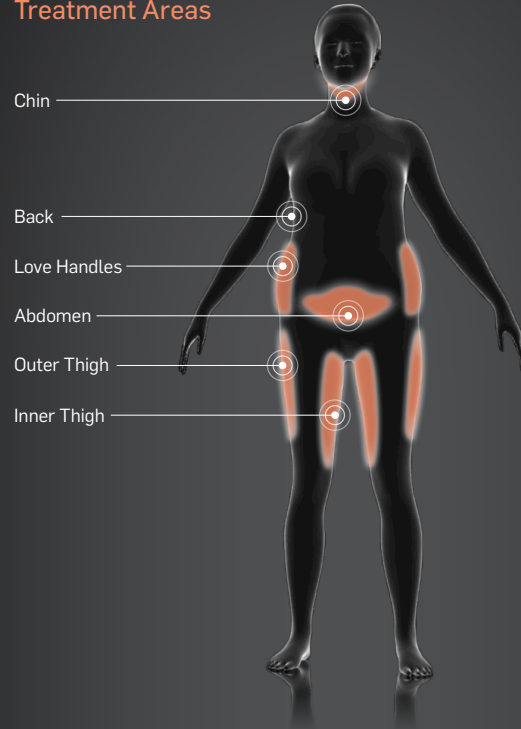


Redefine your shape

Treatment Areas



**NO SURGERY.
NO DOWNTIME.
JUST RESULTS.**

Ask your provider if
SculpSure is right for you.

To learn more, visit
www.sculpsure.com

Models used for illustrative purposes only. Individual results may vary and are not guaranteed. SculpSure is intended for non-invasive fat reduction of the submental (chin) area, abdomen, flanks, back, inner and outer thighs. SculpSure is not a weight loss solution or for people who are obese.

1. Average patient discomfort rating of 3.7 on a scale of 1-10; Bass L, Doherty S. "Non-invasive fat reduction of the abdomen with a 1060nm diode laser." Paper presented at: 2015 Annual American Society for Laser Medicine and Surgery Conference; April 22-26; Kissimmee, FL. 2. Data on file, Cynosure, Inc.

CYNOSURE
A Hologic Company

©2017 Hologic, Inc. All Rights Reserved. Cynosure and SculpSure are registered trademarks of Hologic, Inc. Contact Cooling and a Smarter Way to Sculpt is a trademark of Hologic Inc. Hologic owns exclusive rights to photography. Use of photography without written permission of Hologic is prohibited. 921-7026-005 Rev. 6 11/17



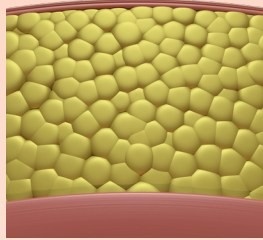
Smart technology is everywhere, steadily transforming our world into a better place. But body contouring has been stuck in the past. Until now.

SculpSure non-surgical body contouring helps you achieve a natural-looking, slimmer appearance in problem areas such as the belly, love handles, back, thighs and under the chin, with a treatment plan that's customized to your desired results.

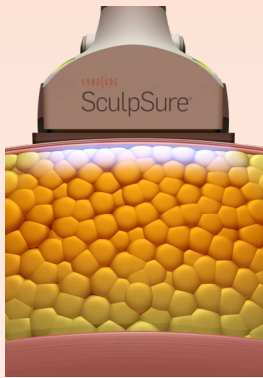
It's simple, efficient, effective.

Finally, body contouring is as advanced as the rest of your world. *It's the smarter choice.*

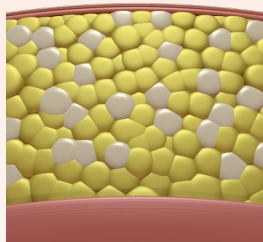
How does SculpSure work?



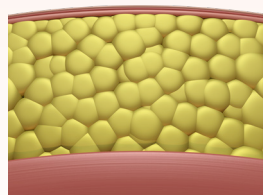
Laser targets and heats fat cells under the skin without affecting the skin's surface.



SculpSure raises the temperature of fat cells damaging their structural integrity. Contact Cooling™ stays on throughout the treatment, which keeps the skin safe and comfortable.



The damaged fat cells are removed naturally from your body through your lymphatic system.



Once the fat cells are removed from your body they cannot regrow.

IS SCULPSURE RIGHT FOR ME?

SculpSure is ideal for people with stubborn areas of fat, particularly those that seem resistant to diet and exercise.

HOW MANY TREATMENTS WILL I NEED?

Every patient is different. Most patients see the best results when they have a series of treatments. Ask your treatment provider about the treatment plan that is right for you.

WHAT SHOULD I EXPECT DURING THE TREATMENT?

Most patients feel a tingling sensation intermittently throughout the treatment which is generally well-tolerated.¹

HOW LONG BEFORE I CAN RESUME NORMAL ACTIVITIES?

There is no recovery period or downtime with SculpSure, so you can have the treatment and return to normal activities immediately.

WHEN WILL I SEE RESULTS?

Patients may start to see results as early as 6 weeks following treatment as the body begins to evacuate the destroyed fat cells, with optimal results usually seen at 12 weeks.

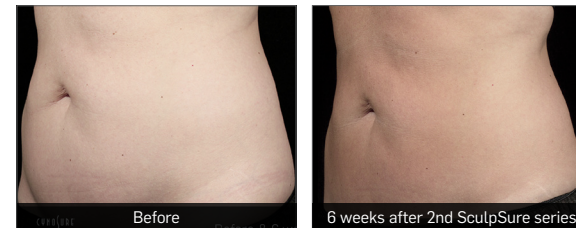
Customized treatments to meet your desired goals.



AREAS TREATED: Upper & lower abdomen, left & right love handles
Courtesy of L. Bass, MD



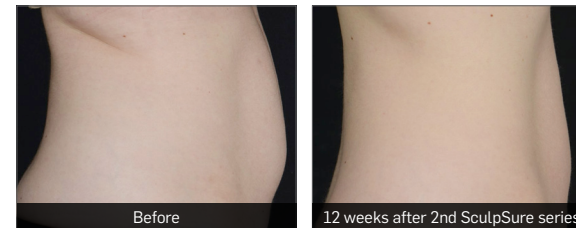
AREAS TREATED: Upper & lower abdomen, left & right love handles
Courtesy of S. Doherty, MD



AREAS TREATED: Upper & lower abdomen, left & right love handles
Courtesy of S. Doherty, MD



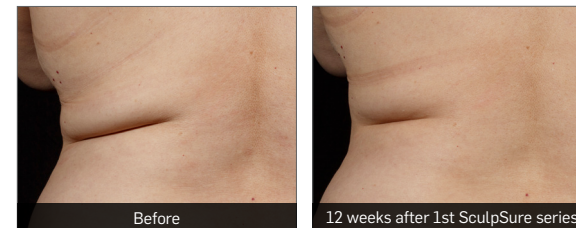
AREAS TREATED: Upper & lower abdomen, left & right love handles
Courtesy of S. Doherty, MD



AREAS TREATED: Upper & lower abdomen, left & right love handles
Courtesy of C. Torgerson, MD



AREAS TREATED: Upper & lower abdomen, left & right love handles
Courtesy of S. Doherty, MD



AREAS TREATED: Left & right lower back
Courtesy of S. Doherty, MD



AREAS TREATED: Inner & outer thighs
Courtesy of Rejuva Medical Aesthetics